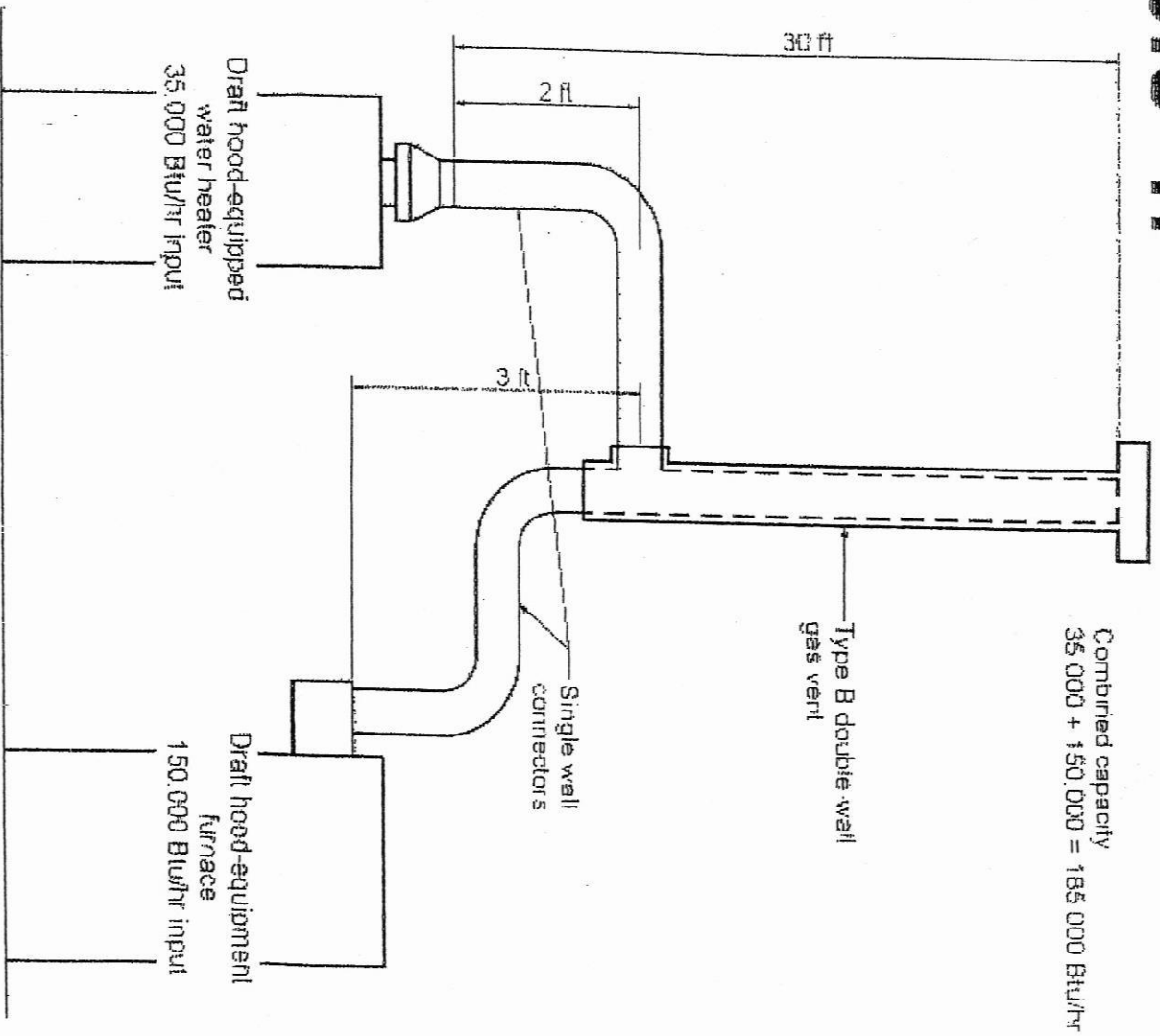
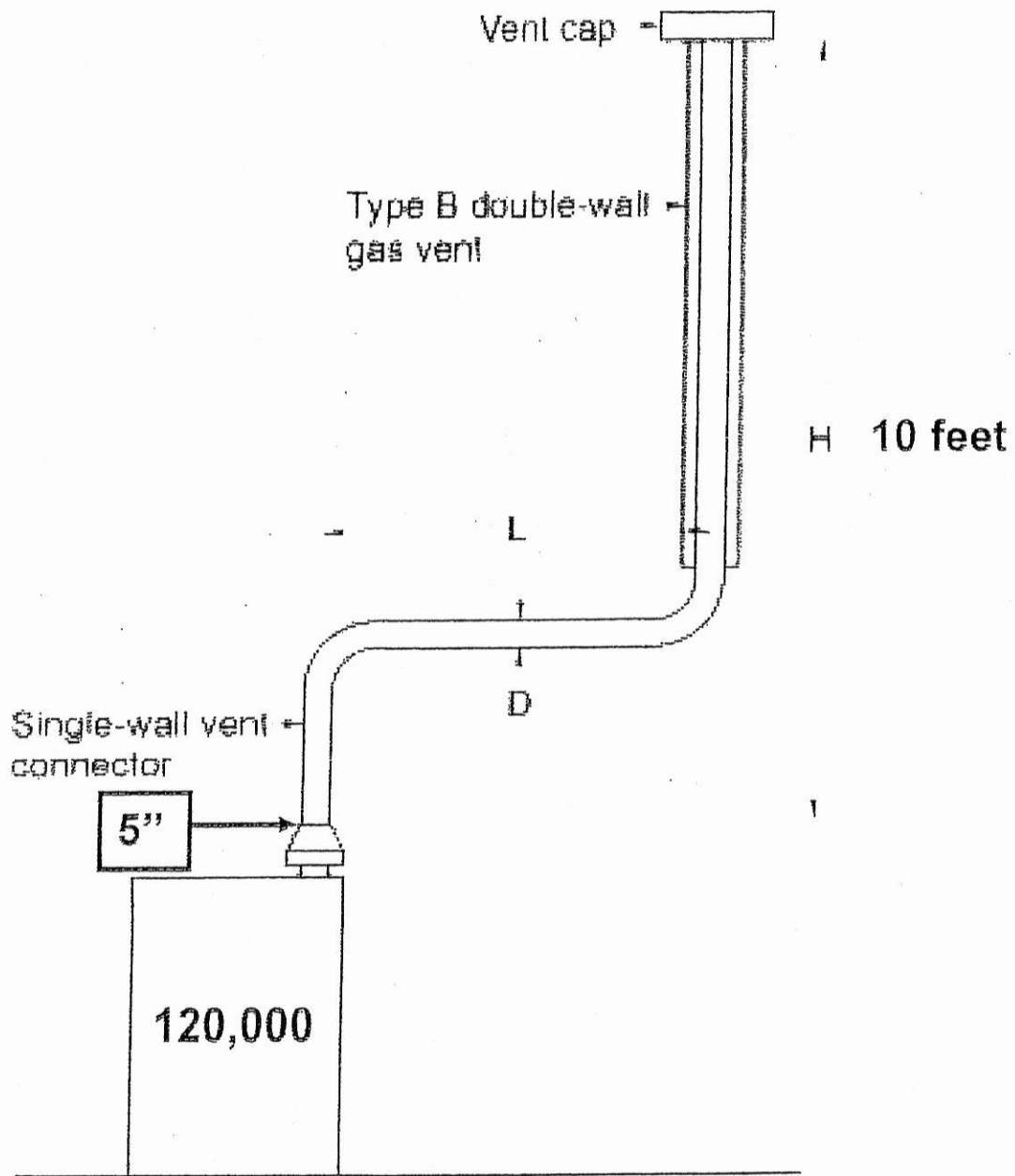
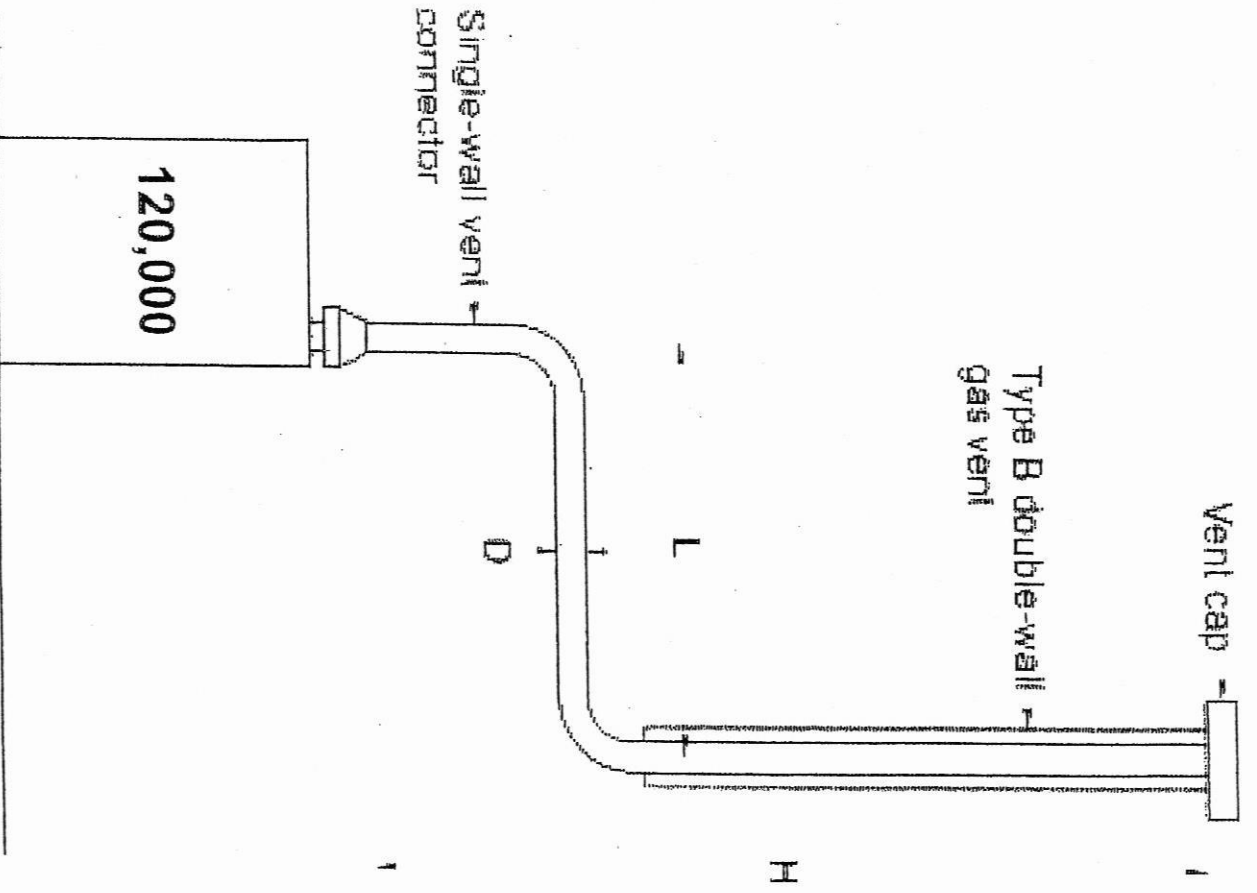


Example 4:







WATER HEATER
AUTOMATIC
INSTANTANEOUS
CAPACITY at 4 gal.
Per minute

10'

10 D.

GAS: Natural
Inlet Pressure: Less than 2 PSI
Pressure Drop: 0.5 in. W.C.
Specific Gravity: 0.60

Total length of Pipe 100'
Using longest length method

O.D.

Water Heater
Automatic
Instantaneous
Capacity at 4 gal.
Per minute

10'

20'

10'

Clothes dryer
TYPE 1 (domestic)

GAS: Natural

Inlet Pressure: Less than 2 PSI

Pressure Drop: 0.5 in. w.c.

Specific Gravity: 0.60

Total length of Pipe 100'
Using longest length method

ercise 1 b

RANGE
Free standing
Domestic

15'

Water Heater
Automatic
Instantaneous
Capacity at 4 gal
Per minute

10'

20'

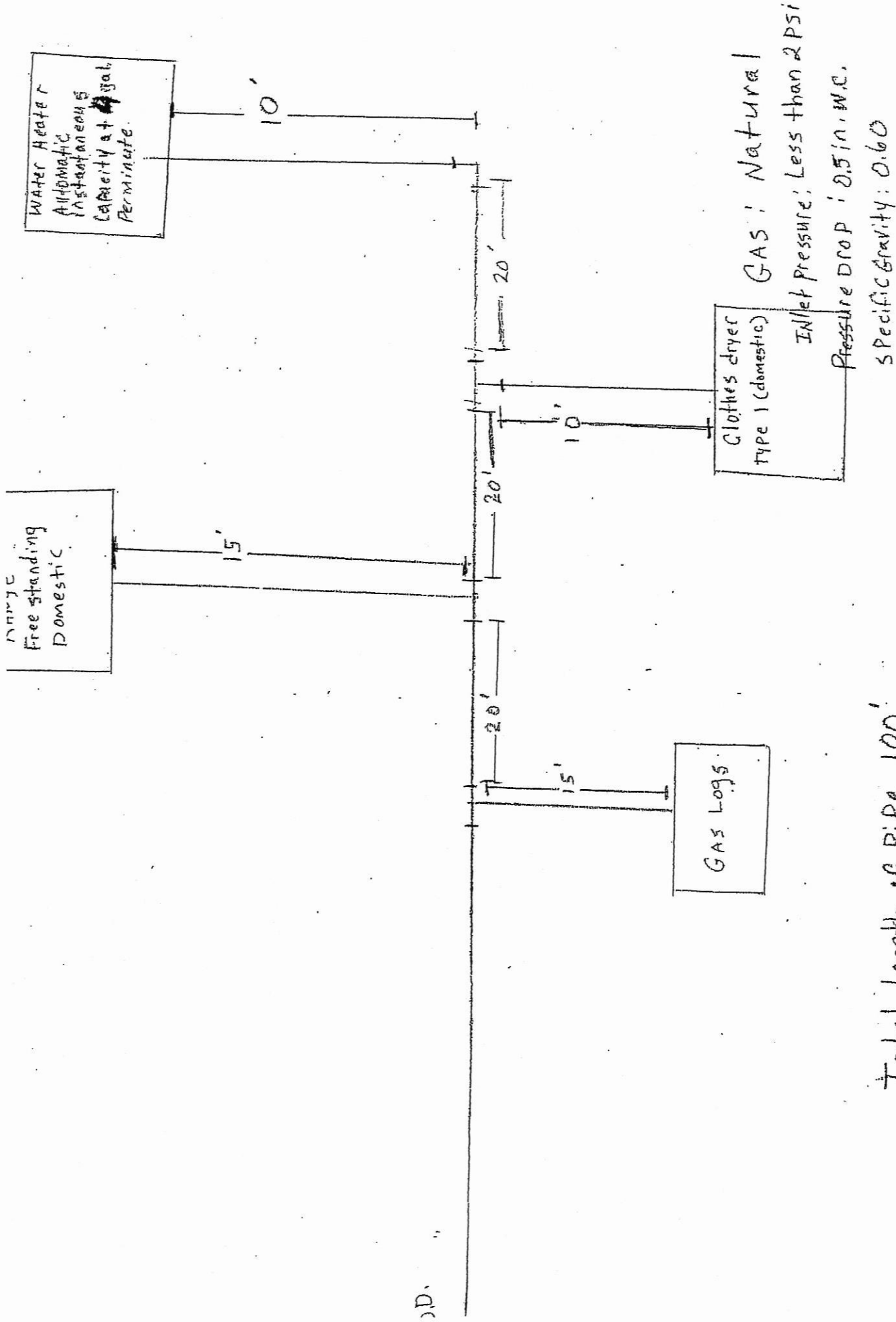
20'

10'

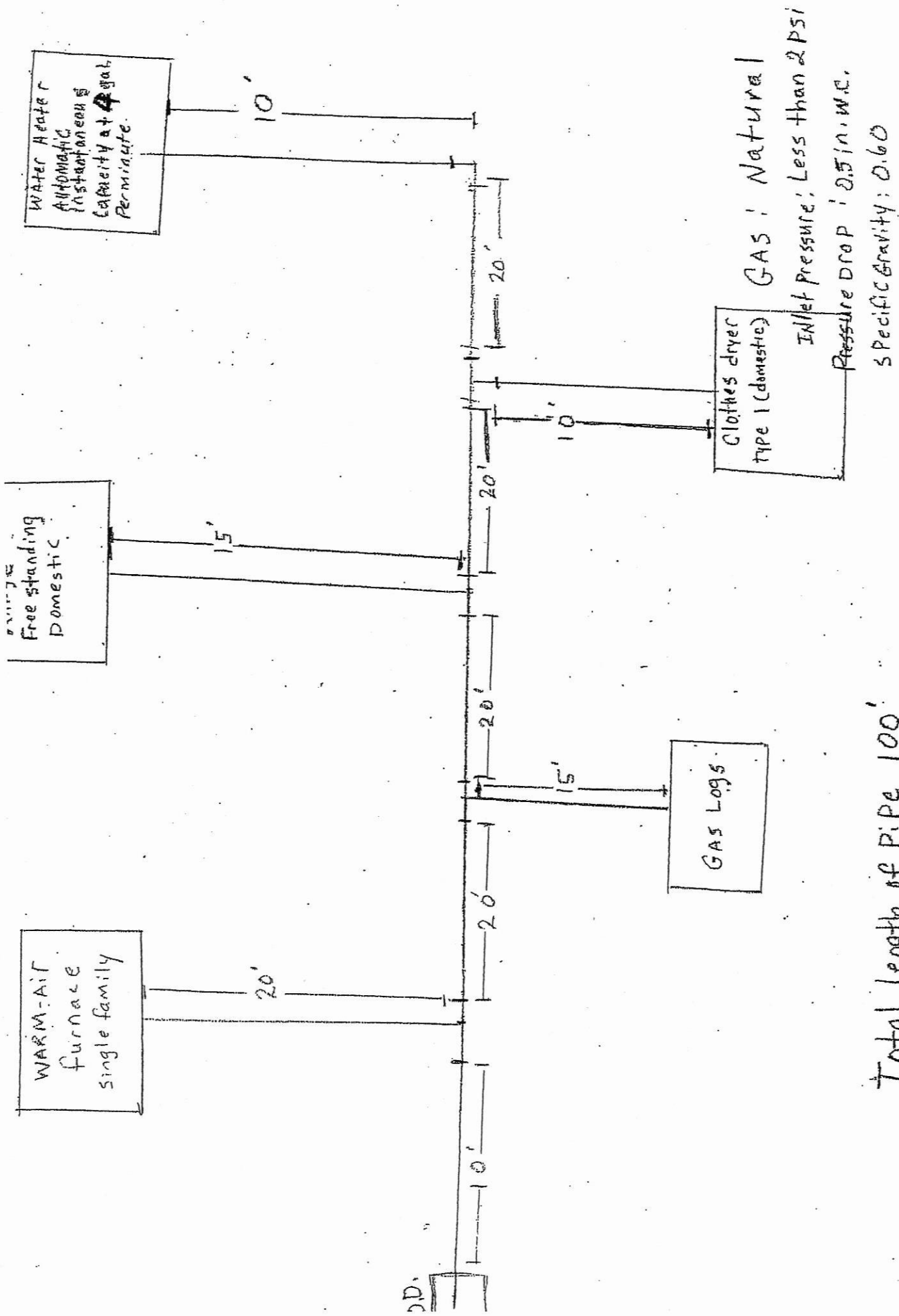
Clothes dryer
Type 1 (domestic)

GAS: Natural
Inlet Pressure: Less than 2 PSI
Pressure Drop: 0.5 in. W.C.
Specific Gravity: 0.60

Total length of Pipe 100'
Using longest length method



Total length of Pipe 100'
 using longest length method



Total length of pipe 100'
 using longest length method